

Boosting drug development through Public-Private Partnerships: The IMI Model

Hugh Laverty

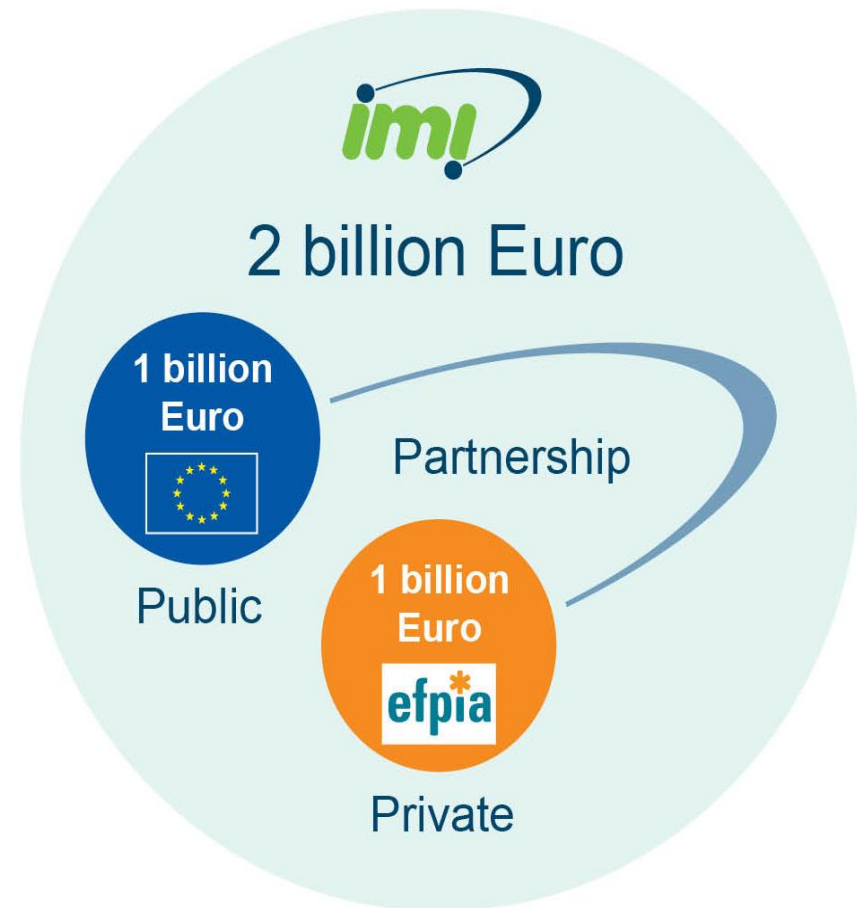
Senior Scientific Project Manager



Innovative Medicines Initiative



The European Union and the pharmaceutical industry have joined forces to make drug R&D processes in Europe more innovative and efficient and enhance Europe's competitiveness in the sector & address key societal challenges by forming the biggest PPP in Life Science





➤ “Non-competitive” collaborative research for EFPIA companies

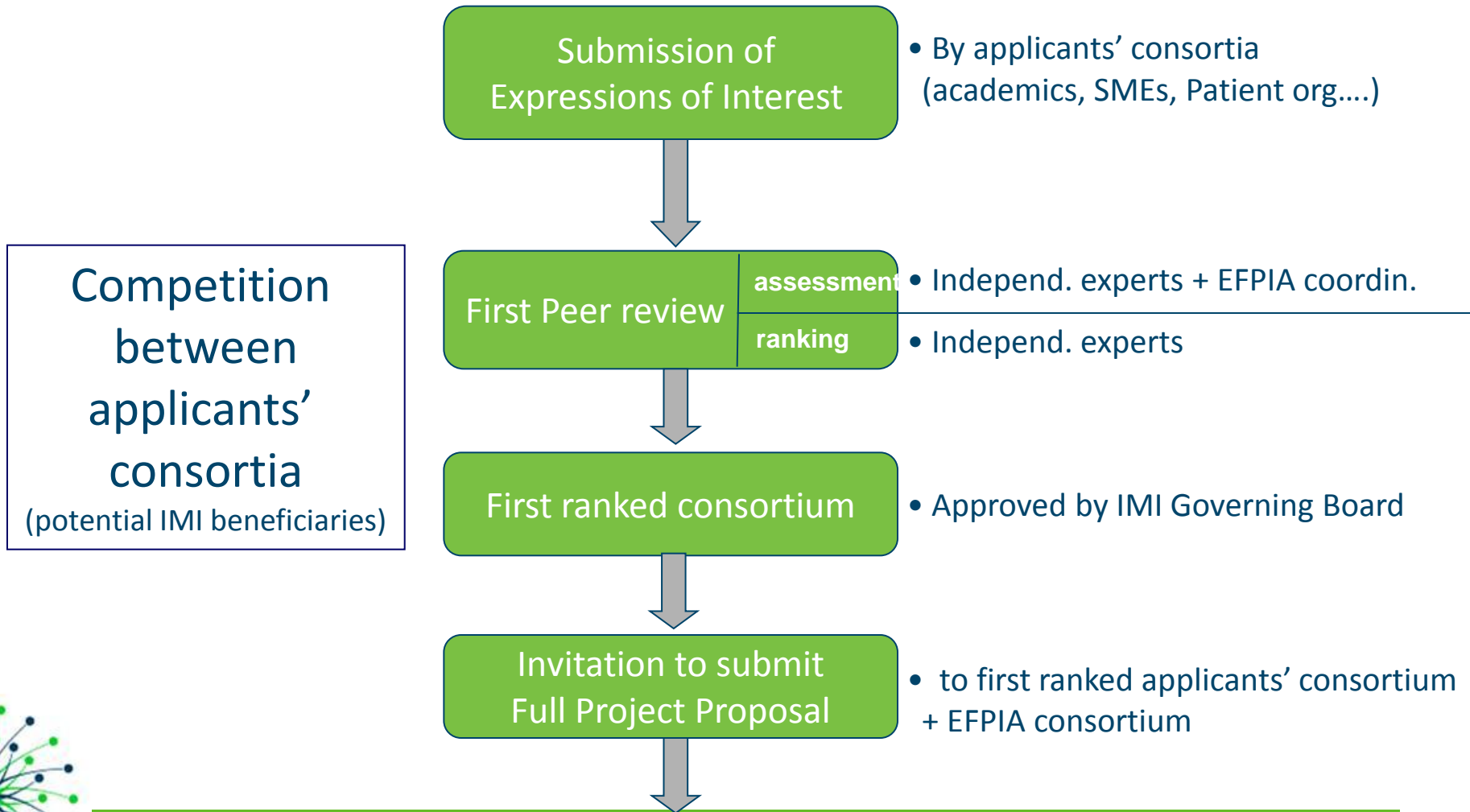
➤ Open collaboration in public-private consortia (data sharing, wide dissemination of results)

➤ Competitive calls to select partners of EFPIA companies (IMI beneficiaries)

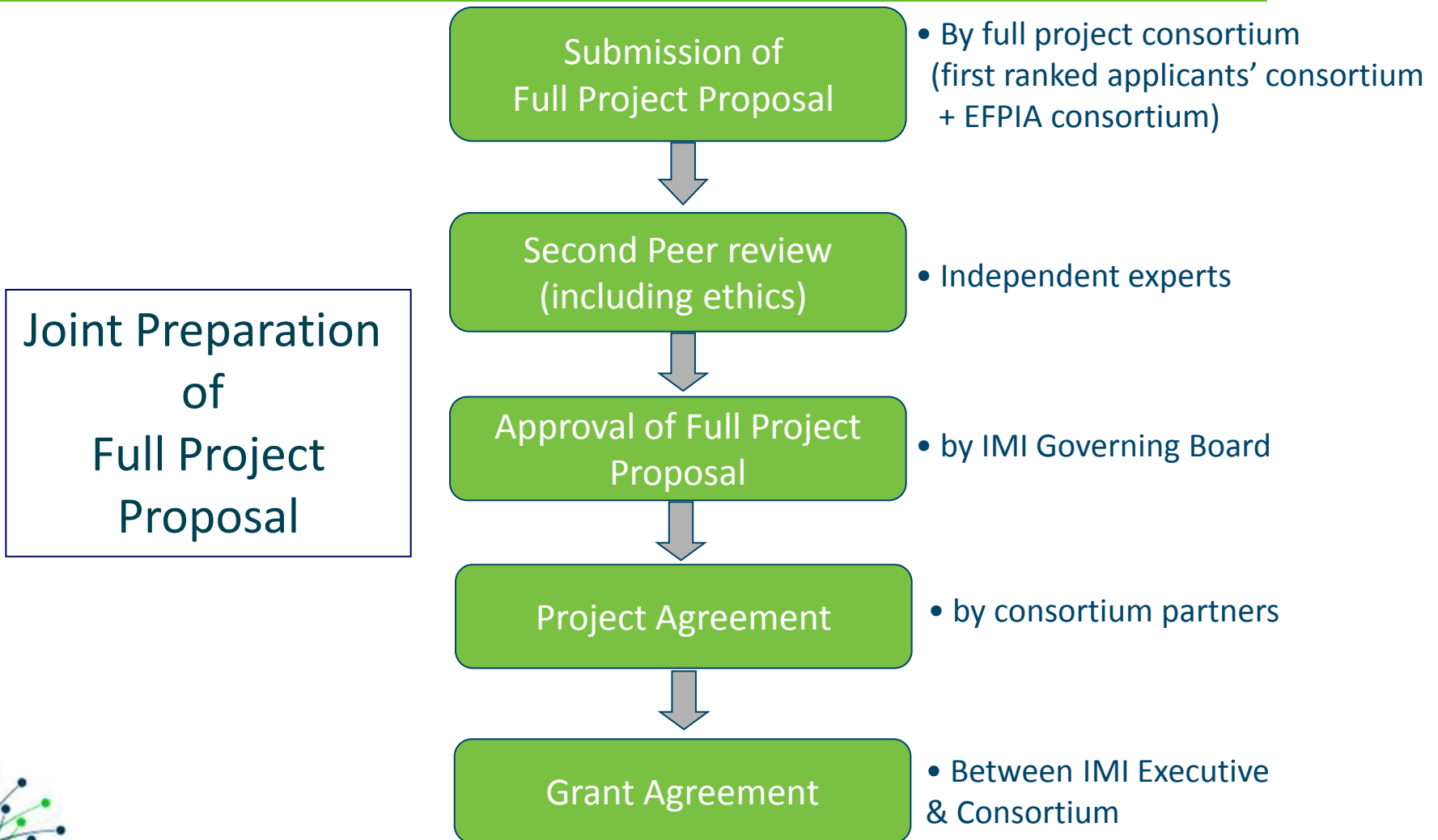




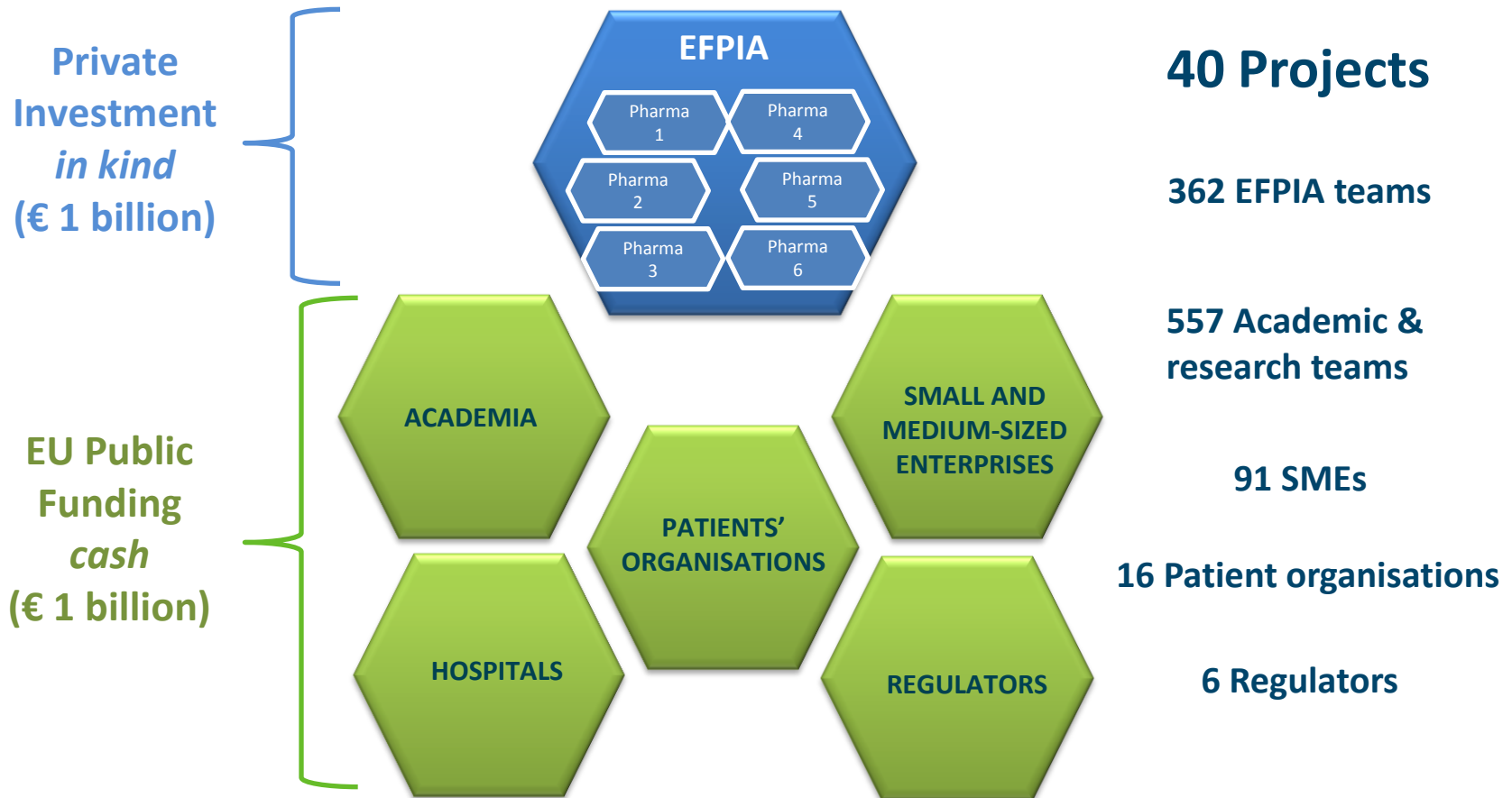
Building an IMI Project (1/2)



Building an IMI Project (2/2)

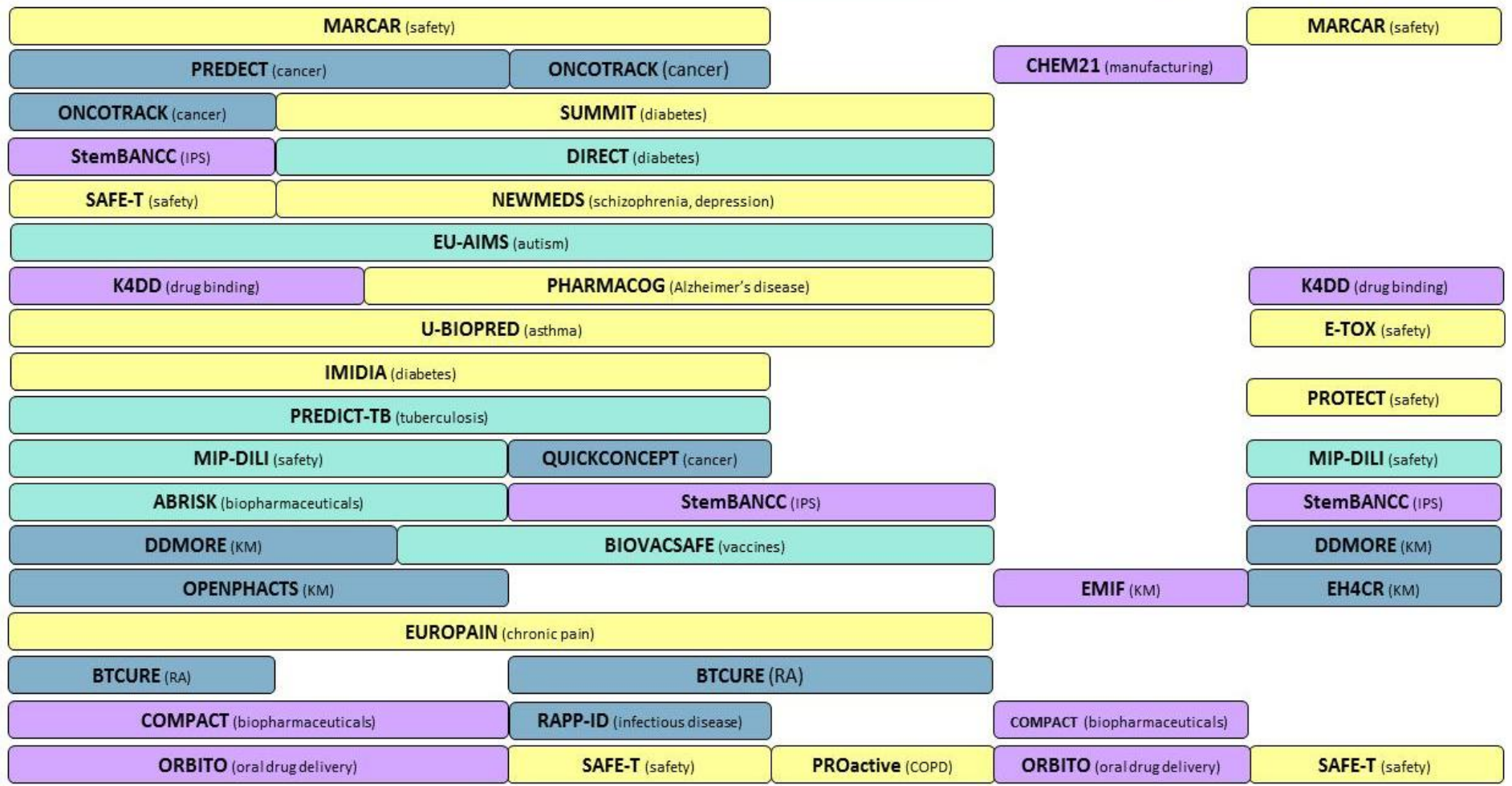


A Typical IMI Consortium



Value Chain Coverage - Calls

- 1
- 2
- 3
- 4

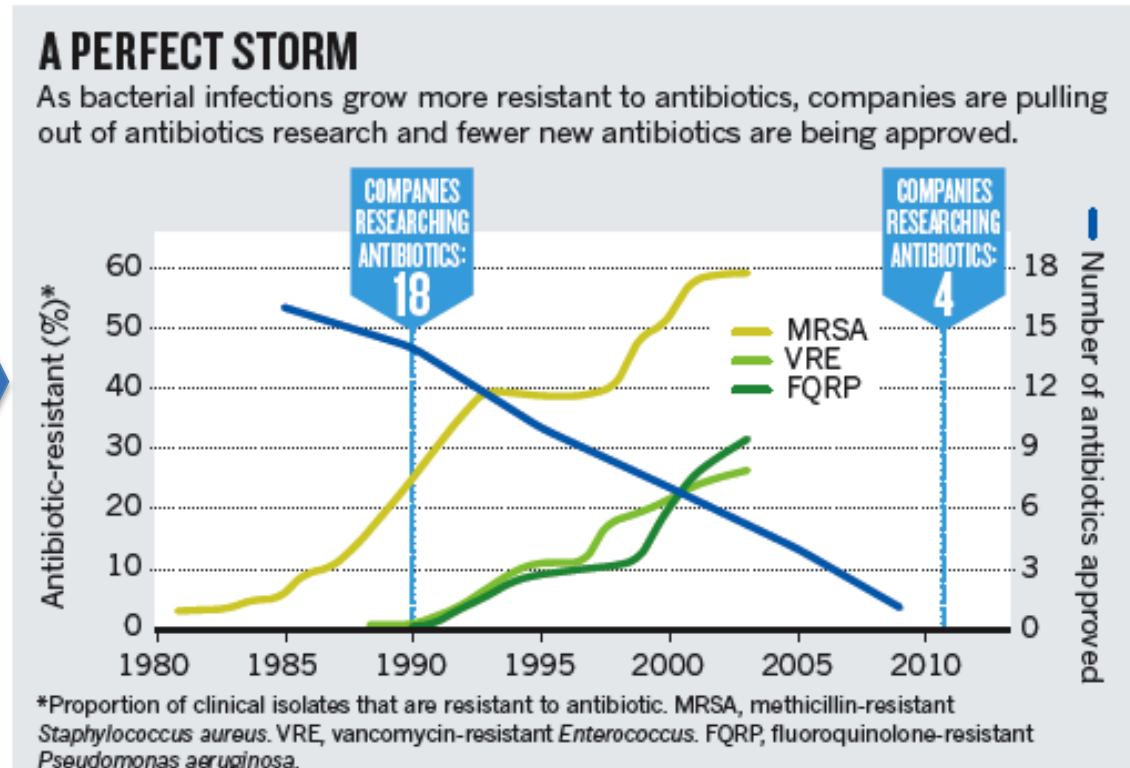


Antibiotic drug development: 'New Drugs 4 Bad Bugs'



Challenges of AB R&D:

- Unique scientific bottlenecks
- Challenging regulatory environment
- Low return on investment



32 | NATURE | VOL 472 | 7 APRIL 2011

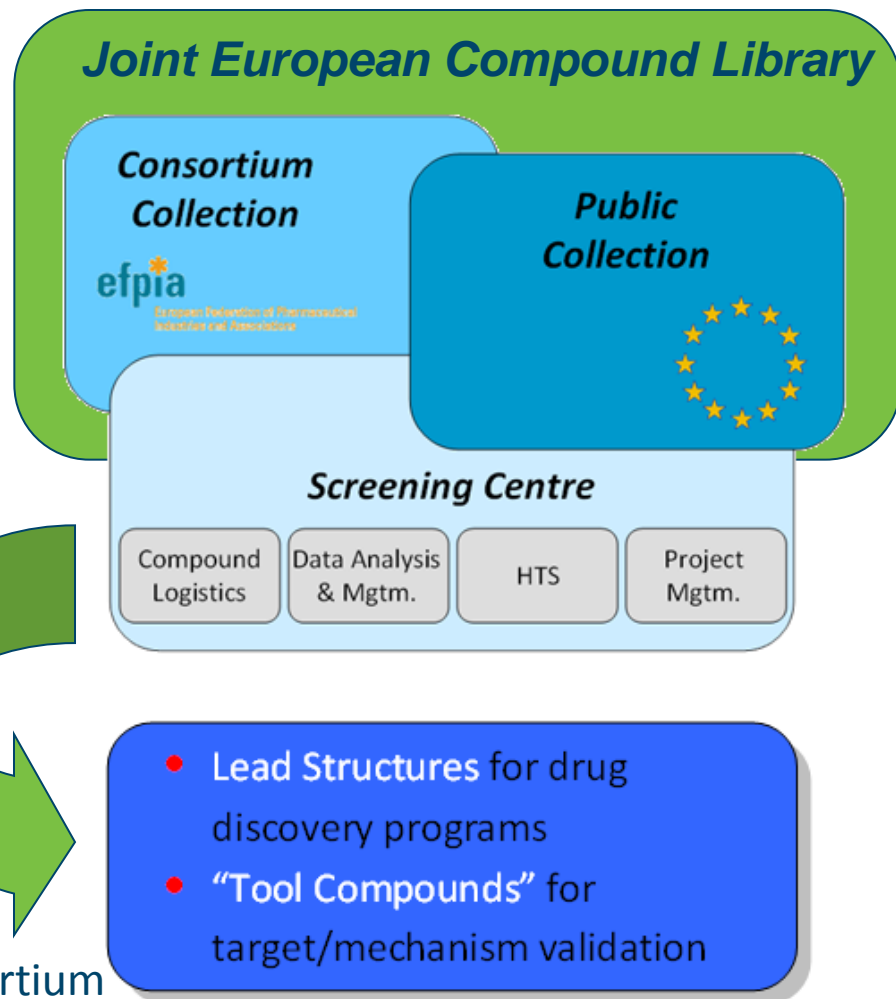
***Challenges too great for any single entity to solve,
collaboration is essential***



European Lead Factory



- ❑ **Joint European Compound Library** accessible for private and public lead discovery projects
- ❑ JECL is comprised of a Pharma **Consortium Collection** (≥ 300.000 compounds) and a **Public Collection** (up to 200.000 cpds.)
- ❑ The **Screening Centre** – as an independent novel business entity – takes responsibility for cpd. logistics, HTS (internal and out-sourced), data analysis & handling, and project mgmt.
- ❑ Screening Centre functions as a market place to broker public-private discovery projects with the Pharma Consortium



How IMI makes a difference



**Fosters large scale industry collaboration and engagement
with scientific community**

**Promotes active involvement of patients, regulators and
payers**

**Enables innovation via join effort where singular
approach has failed so far**

Facilitates Intellectual Property agreements



One IMI IP policy, multiple interests



Direct exploitation rights
(academia /SME)
Terms known at outset
(Pharma)

Fair and reasonable terms
for Research Use purposes
for third parties

Innovative Medicines

Dissemination
within a year

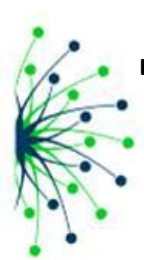
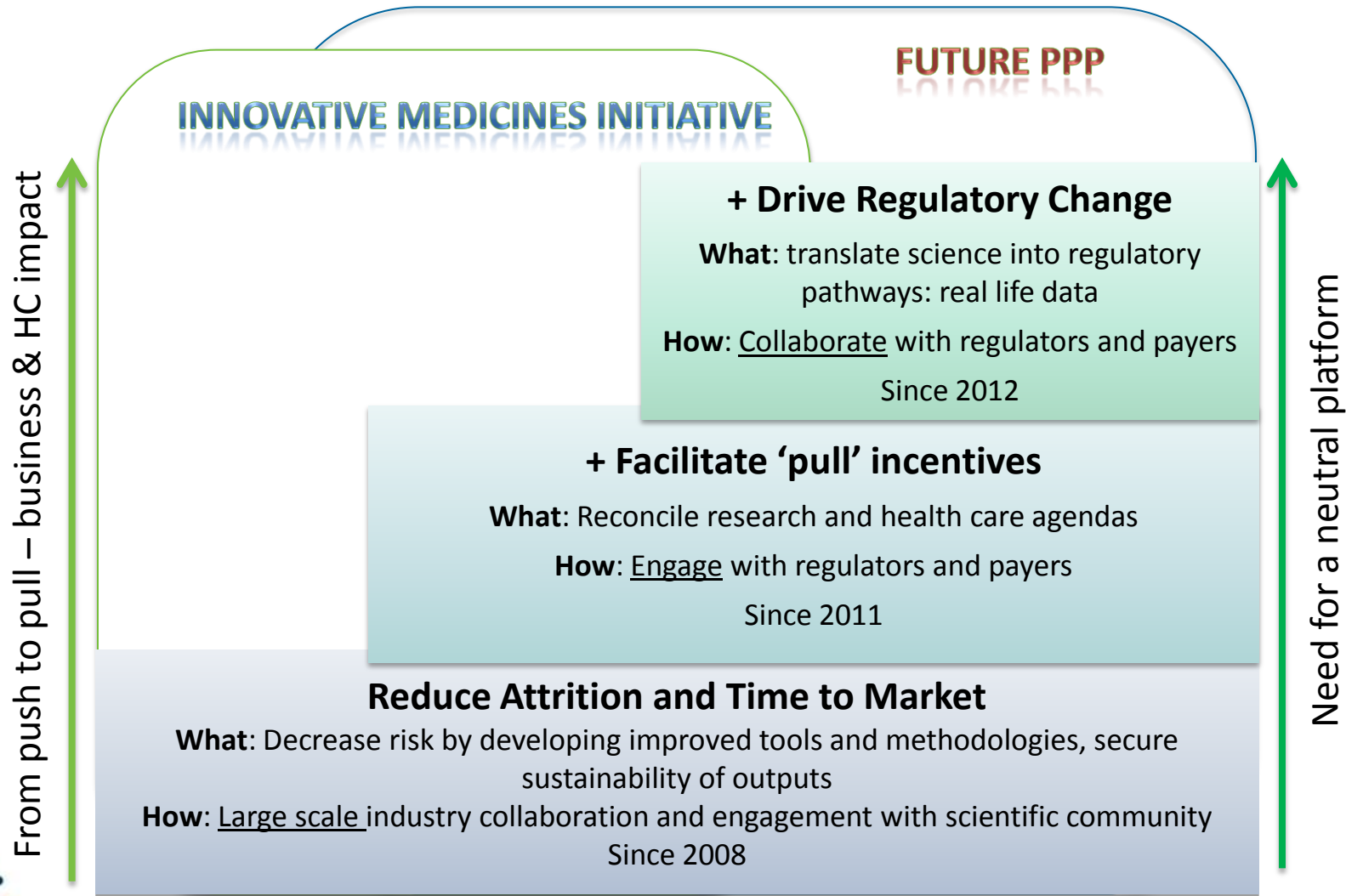
Terms accommodate the needs of
a spectrum of interests - large and
small

Only necessary background included
Compensation within fair and reasonable
terms



The Evolution of IMI

From bottlenecks in industry to bottlenecks in society



The Challenges



Difficulties reaching international agreement on common priorities

Insufficient modalities of funding

Obstacles to the transfer of science, technology and innovation into practice

Insufficient participation of relevant actors in society

The lack of integration of countries with weak scientific infrastructure

Problems of intellectual property management for applications of new technologies



The Challenges



Difficulties reaching international agreement on common priorities

Insufficient modalities of funding

Obstacles to the transfer of science, technology and innovation into practice

Insufficient participation of relevant actors in society

The lack of integration of countries with weak scientific infrastructure

Problems of intellectual property management for applications of new technologies



Ensuring success from future global initiatives



Mechanisms to allow individuals and institutions to engage internationally

Inclusive and flexible approach

Focus on addressing societal needs

Clearly defined IPR Policy

Neutral broker



Keep up to date



- Visit www.imi.europa.eu
- Sign up to the IMI [Newsletter](#)
- Follow us on [Twitter](#): [@IMI_JU](#)
- Join the IMI group on [LinkedIn](#)
- Questions? E-mail us: Hugh.Laverty@imi.europa.eu

A screenshot of the IMI website homepage. At the top, there is a navigation bar with 'Contact', 'Newsletter', and 'Links' links. Below this is a large banner image showing a group of people in a laboratory setting. The main content area is divided into several sections: a '2012 - Research topic preview' section with a 'more' link; an 'ABOUT IMI' section with a 'more' link; a '5TH CALL OPEN INFO DAY - REGISTRATION OPEN' section with a 'more' link; a 'PARTNER SEARCH TOOL UPDATED' section with a 'more' link; a 'VISIT IMI'S ONGOING PROJECTS' section with a 'more' link; an 'EDUCATION & TRAINING' section with a 'more' link; a 'PRESS RELEASES & MEDIA' section with a 'more' link; a 'NEWSLETTER' section with a 'Subscribe to the IMI newsletter' link; and a 'NEW IMI FUNDING RULES AND SIMPLIFIED PROCEDURES' section with links to 'press release and factsheet' and 'Read the revised Grant Agreement'. The bottom of the page features the European Union flag and the 'efpia' logo.





Innovative Medicines Initiative

THANK YOU !



efpia